

## SPECIAL EVENTS

### Monthly

#### FIRST FRIDAYS AT THE MUSEUM

FIRST FRIDAY OF EVERY MONTH

5-9 P.M.

#### Free

Spend a delightfully different evening watching a cult classic movie (*The Natural Horror Picture Show*), enjoying light fare and beverages from the Acro Café, grooving to live music, shopping for educational toys at the Museum store, welcoming a new artist to the Nature Art Gallery and strolling through fabulous exhibits at your leisure.

### December

#### GOVERNOR'S TREE LIGHTING

THURSDAY, DECEMBER 10

5-7 P.M.

#### Free

Come and meet the animals after hours! The Museum will stay open late for visitors attending the Governor's Tree Lighting.

#### FIRST NIGHT RALEIGH

WEDNESDAY, DECEMBER 31

3-10 P.M.

The Museum joins the annual downtown Raleigh celebration. Note: A First Night button is required to participate in event activities. Buttons are available in the Museum Store and at many locations throughout Wake County. Call 919.832.8699 for prices and details.

### January

#### ASTRONOMY DAYS

SATURDAY, JANUARY 30, 9 A.M.-5 P.M. AND

SUNDAY, JANUARY 31, NOON-5 P.M.

#### Free

See the big picture — of the Universe! NASA exhibits, telescopes, astrophotography, kids' crafts and animals of the constellations. You can even launch your own rocket!

### February

#### GROUNDHOG DAY

TUESDAY, FEBRUARY 2

10 A.M.-3 P.M.

#### Free

Meet Sir Walter Wally the groundhog and get his prognostication for the next six weeks.

#### DARWIN DAY

SATURDAY, FEBRUARY 13

NOON-5 P.M.

#### Free

Spend an afternoon learning about Charles Darwin and his theory of natural selection. Investigate how Darwin's theories from 150 years ago are critical to modern scientific research, and meet some of the scientists doing this work! *Sponsored by the National Evolutionary Synthesis Center (NESCent).*

### March

#### REPTILE AND AMPHIBIAN DAY

SATURDAY, MARCH 13

9 A.M.-5 P.M.

#### Free

See amazing and exotic live reptiles and amphibians from around the world. Get up close to venomous snakes, poison dart frogs and other herps from hot places.

### April

#### PLANET EARTH CELEBRATION

SATURDAY, APRIL 17

11 A.M.-6 P.M.

#### Free

Learn about living sustainably, view exciting models for sustainable buildings and meet some cool green vendors.

PROGRAM CALENDAR  
Fall/Winter 2009

## WORKSHOPS & TRIPS

FOR INFORMATION, PLEASE CALL 919.733.7450 X555 (EXCEPT WHERE NOTED). UNLESS OTHERWISE INDICATED, THE REGISTRATION DEADLINE FOR A TRIP INVOLVING OVERNIGHT STAYS OR RENTAL EQUIPMENT IS TWO WEEKS PRIOR TO TRIP START DATE. TRIPS FAILING TO REACH THE MINIMUM REGISTRATION NUMBERS BY THE DEADLINE MAY BE CANCELED. PLEASE CALL TO CHECK ON TRIP STATUS IF INTERESTED IN REGISTERING FOR A TRIP AFTER THE DEADLINE. REGISTRATION FORM ON PAGE 24.

### ACTIVITY LEVEL GUIDE

**Easy:** Short hikes over fairly level ground.

**Moderate:** Medium-length hikes with an increase in grade and uneven terrain. Some rest periods provided.

**Strenuous:** Hikes over rough terrain and steep inclines. Frequent rest periods provided. Participants must be in good physical condition.

## Monthly

### LIFELONG HIKERS

WEDNESDAYS:

NOVEMBER 18	8:30 A.M.—4:30 P.M.	WEYMOUTH WOODS
DECEMBER 9	8:30 A.M.—12:30 P.M.	FALLS LAKE TRAIL
FEBRUARY 10	8:30 A.M.—12:30 P.M.	HARRIS LAKE COUNTY PARK
MARCH 10	8:30 A.M.—12:30 P.M.	ROLESVILLE ROCK OUTCROP
APRIL 14	8:30 A.M.—4:30 P.M.	BLADEN LAKES STATE FOREST

FEE: \$5 PER HIKE (\$3 FOR FRIENDS OF THE MUSEUM)

Lifelong Hikers, these hikes are just for you! Join Museum naturalists on a hike through some of the Triangle's most beautiful places on these leisurely 2–3 mile hikes. For information, contact Jerry Reynolds at 919.733.7450 x522, jerry.reynolds@ncdenr.gov.

LEADERS: JESSE PERRY AND JERRY REYNOLDS, MUSEUM EDUCATORS

MINIMUM AGE: 18

ACTIVITY LEVEL: EASY TO MODERATE

## November

### RHODES POND PADDLE TRIP (244)

SUNDAY, NOVEMBER 8, 8 A.M.—6 P.M.

FEE: \$50 (\$40 FOR FRIENDS OF THE MUSEUM)

Join us on a leisurely fall paddling trip through the cypress forest of Rhodes Pond in Cumberland County. Birds, aquatic animals and plants will be our focus as we study this beautiful aquatic habitat. No paddling experience necessary.

LEADER: JERRY REYNOLDS, MUSEUM EDUCATOR

MINIMUM AGE: 10 (MINORS MUST BE ACCOMPANIED BY REGISTERED ADULT)

ACTIVITY LEVEL: EASY TO MODERATE

## December

### BIRDS OF WINTER (245)

FRIDAY, DECEMBER 11, 3:45 P.M. — SUNDAY, DECEMBER 13, 6 P.M.

FEE: \$145 (\$123 FOR FRIENDS OF THE MUSEUM)

Spend two days in the wilds of eastern North Carolina observing one of the largest concentrations of winter birds along the East Coast. Learn how to identify waterfowl, raptors and other bird species. Short hikes and easy viewing from the Museum vehicles make this an ideal trip for both novice and seasoned birders.

LEADERS: MELISSA DOWLAND, MIKE DUNN AND JERRY REYNOLDS, MUSEUM EDUCATORS

MINIMUM AGE: 12 (MINORS MUST BE ACCOMPANIED BY REGISTERED ADULT)

ACTIVITY LEVELS: EASY TO MODERATE



MELISSA DOWLAND

## January

### PLANT PROPAGATION II: WINTER WOODY STEM CUTTINGS (246)

SATURDAYS:

SESSION 1: JANUARY 9, 9 A.M.—NOON, MUSEUM CLASSROOM

SESSION 2: JANUARY 16, 9 A.M.—NOON, J.C. RAULSTON ARBORETUM

SESSION 3: APRIL 10, 9 A.M.—NOON, NCDA GREENHOUSE

FEE: \$35 (\$25 FOR FRIENDS OF THE MUSEUM)

This sequel to our popular autumn program emphasizes propagation of woody plants that need cold weather for rooting success, including many types of juniper and other evergreen conifers. Propagate and keep plants from J.C. Raulston Arboretum under the supervision of an expert.

LEADERS: FRANK BLAZICH, NCSU DEPARTMENT OF HORTICULTURE, AND JESSE PERRY, MUSEUM EDUCATOR

MINIMUM AGE: 18

ACTIVITY LEVEL: EASY

## February

### AMPHIBIAN LOVE (247)

SATURDAY, FEBRUARY 13, 9 A.M.—5 P.M.

FEE: \$10 (\$5 FOR FRIENDS OF THE MUSEUM)

Learn about our wonderful diversity of frogs and salamanders in the classroom in the morning session. Then visit their winter breeding ponds in the afternoon for a hands-on look at these marvelous creatures. Field trip involves wading in shallow ponds.

LEADER: JERRY REYNOLDS, MUSEUM EDUCATOR

MINIMUM AGE: 12 (MINORS MUST BE ACCOMPANIED BY REGISTERED ADULT)

ACTIVITY LEVEL: EASY

## March

### NORTH CAROLINA ROCKS! (248)

SATURDAY, MARCH 6, 9 A.M.—5 P.M.

FEE: \$10 (\$5 FOR FRIENDS OF THE MUSEUM)

Learn about the geologic history of North Carolina and the rocks that resulted from that history. The morning will be spent in the Museum learning about the geologic processes that have shaped our state. The afternoon will be spent in the field looking at different examples of rocks found locally.

LEADER: JERRY REYNOLDS, MUSEUM EDUCATOR

MINIMUM AGE: 12 (MINORS MUST BE ACCOMPANIED BY REGISTERED ADULT)

ACTIVITY LEVEL: EASY

### MYSTERIOUS CAROLINA BAYS (249)

FRIDAY, MARCH 26, 1 P.M. — SUNDAY, MARCH 28, 6 P.M.

FEE: \$50 (\$40 FOR FRIENDS OF THE MUSEUM)

The southern coastal plain of North Carolina is pocked with these strange elliptical shaped depressions. Some are water filled while others are vegetated by a dense assembly of evergreen trees, shrubs and vines. Their origin has been studied and theorized for years with no definitive answer. Explore the mysterious Carolina bays and come up with your own theory.

LEADER: JERRY REYNOLDS, MUSEUM EDUCATOR

MINIMUM AGE: 12 (MINORS MUST BE ACCOMPANIED BY REGISTERED ADULT)

ACTIVITY LEVEL: EASY TO MODERATE

## April

### LUMBER RIVER PADDLE (250)

SUNDAY, APRIL 11, 7 A.M.—7 P.M.

FEE: \$60 (\$50 FOR FRIENDS OF THE MUSEUM)

The Lumber River is the only North Carolina black water river to be designated as a national wild and scenic river. Lumber River State Park contains 7,936 acres of land and 115 miles of river. Join us on a leisurely 4–5 hour paddle down the river and experience spring on this natural treasure.

LEADER: JERRY REYNOLDS, MUSEUM EDUCATOR

MINIMUM AGE: 10 (MINORS MUST BE ACCOMPANIED BY REGISTERED ADULT)

ACTIVITY LEVEL: EASY TO MODERATE

### B.W. WELLS WEEKEND AT THE COAST (251)

FRIDAY, APRIL 23, 1 P.M. — SUNDAY, APRIL 25, 7 P.M.

FEE: \$60 (\$50 FOR FRIENDS OF THE MUSEUM & B.W. WELLS ASSOCIATION)

We will follow in the footsteps of Dr. B.W. Wells in our journey to the coast, visiting many of the special places that he studied during his botany career in North Carolina, including Carolina bays, longleaf pine savannas, dense pocosins and other coastal vegetation communities.

LEADERS: JERRY REYNOLDS, MUSEUM EDUCATOR; KEN MOORE,

B.W. WELLS ASSOCIATION EDUCATOR

MINIMUM AGE: 14 (MINORS MUST BE ACCOMPANIED BY REGISTERED ADULT)

ACTIVITY LEVEL: EASY TO MODERATE

## DAILY AT THE MUSEUM

IMMERSE YOURSELF IN THE NATURAL SCIENCES THROUGH MOVIES, LIVE PRESENTATIONS AND HANDS-ON DISCOVERY. FREE PROGRAMS AVAILABLE SEVEN DAYS A WEEK. NO REGISTRATION REQUIRED; SPACE IS LIMITED.

## WRAL Digital Theater

(FIRST FLOOR)

### HIGH-DEFINITION MOVIES

Take a virtual plunge into the heart of nature in our hi-def theater.

MONDAY—FRIDAY: 10:30 & 11:30 A.M., 1:30, 2 & 3 P.M.

SATURDAY: 10 A.M., 2 P.M. & 3 P.M.

SUNDAY: 1 P.M. & 2 P.M.

### LIVE! AT THE MUSEUM

Join Museum presenters for an exciting glimpse into our natural world.

SATURDAY: 11:30 A.M., 12:30 P.M.

SUNDAY: 3:30 P.M.

## Windows on the World

(THIRD FLOOR)

### Demonstration Theater

#### STORY TIME

Listen to an exciting nature tale then meet awesome live animals.

MONDAY—FRIDAY: 10:30 A.M.

#### SPANISH STORY TIME

Listen to a fun nature tale en Español then meet live animals.

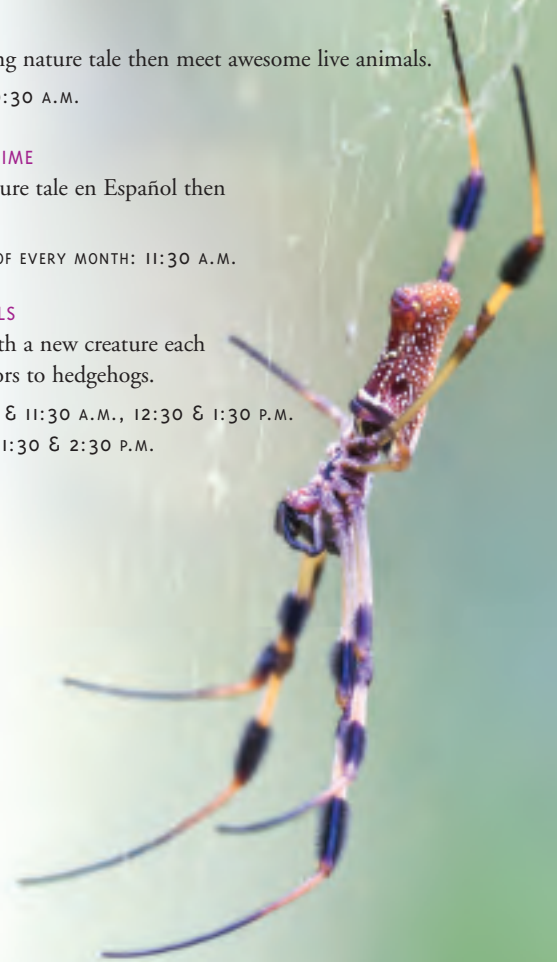
1<sup>ST</sup> & 3<sup>RD</sup> SATURDAY OF EVERY MONTH: 11:30 A.M.

#### MEET THE ANIMALS

Get acquainted with a new creature each week, from alligators to hedgehogs.

MONDAY—FRIDAY: 11 & 11:30 A.M., 12:30 & 1:30 P.M.

SATURDAY—SUNDAY: 1:30 & 2:30 P.M.



MELISSA DOWLAND

## ESPECIALLY FOR FAMILIES

REGISTRATION REQUIRED (FORM ON PAGE 24). FOR INFORMATION, CALL  
919.733.7450 X555.

### Family Science Investigations

THIS INNOVATIVE PROGRAM OFFERS FAMILIES AN OPPORTUNITY TO PARTICIPATE TOGETHER IN MONTHLY SCIENCE CLASSES RELATED TO MUSEUM RESEARCH, INCLUDING TOPICS IN ECOLOGY, PALEONTOLOGY, GEOLOGY AND BIOLOGY. THESE CLASSES ARE ESPECIALLY USEFUL FOR PARENTS OF "TRACKED OUT" STUDENTS, HOMESCHOOLERS LOOKING FOR ADDITIONAL REINFORCEMENT OF CURRICULUM GOALS, OR ANY FAMILY GROUP THAT SIMPLY ENJOYS LEARNING TOGETHER.

FEE: \$10 PER PARENT/CHILD PAIR (\$8 FOR FRIENDS OF THE MUSEUM)

#### OUR TROPICAL CONNECTION (242)

NOVEMBER 17, 10–11:30 A.M. (6–9 YEARS OLD)

North Carolina may be separated from the tropics by several hundred miles, yet we remain connected in many ways. Some of the connections are obvious, like the winter migration of many North Carolina birds. Other connections have a much more tangled and intriguing path. How does an eye patient in our state benefit from the poison of a tropical frog? How did World War II contribute to the success of the invasive fire ant in North Carolina? Join us as we identify and define tropical environments and our many connections to them.

#### WILD AND WACKY (255)

TUESDAY, JANUARY 26, 10–11:30 A.M. (6–10 YEARS OLD)

Many creatures may look wild and wacky yet there is "method to their madness." In this class we will discover the reason behind the ugliness of a toad fish, the slime of a slug or why some clams prefer to look like fish. Which creatures live in the highest, coldest or deepest parts of our planet? How do they survive? Join us as we learn about the most bizarre creatures on the planet, from weirdest looking to the strangest acting!

#### NATURE'S MACHINES (256)

TUESDAY, FEBRUARY 23, 10–11:30 A.M. (8 YEARS AND UP)

Humans are as much a part of nature as a tree, yet our approach to survival seems different than other living things. Our technology and machinery do not closely resemble nature's and we often use very different approaches to the same problems. Humans employ levers, screws, pulleys and ramps to accomplish their goals, but what about nature? During this class we will investigate and compare the technologies of both worlds.

#### SLICE OF PI (257)

TUESDAY, MARCH 23, 10–11:30 A.M. (10 YEARS AND UP)

So much of nature is round, from sand dollars to tree trunks to owl eggs. Scientists often need to determine the diameter, area and volume of these rounded natural objects and the number Pi (3.14) is usually at the heart of such measurements. In this class we will learn the amazing history and the scientific application of this very important number through hands-on activities.

#### ARTHROPODS RULE (258)

TUESDAY, APRIL 20, 10–11:30 A.M. (6–10 YEARS OLD)

Arthropods, especially insects, are a part of our everyday life. We paint with them, we dye our food with them and we even enlist some insects to make clothing for us! During this class, we will look at the economic impact that insects and other arthropods have made on the human world. We will look at some of the most beautiful arthropods and some of the most dangerous.

FEE: \$6 PER PARENT/CHILD PAIR.

### Nature Fun for the Very Young

JOIN MUSEUM EDUCATORS FOR A MORNING OF PARENT AND CHILD DISCOVERY OF THE WONDERS OF NATURE. EACH SESSION ENCOURAGES SAFE, FUN EXPLORATION OF THE NATURAL WORLD WITH LIVE ANIMALS, ARTIFACTS, PLANTS, STORIES AND CRAFTS. REGISTRATION REQUIRED (SEE FORM ON PAGE 24). FOR INFORMATION, CALL 919.733.7450 X555.

FEE: \$8 PER PARENT/CHILD PAIR (\$7 FOR FRIENDS OF THE MUSEUM)

GROUP SIZE: 8 PAIRS

AGES: 2–3 (EACH CHILD MUST BE ACCOMPANIED BY AN ADULT)

LOCATION: MUSEUM CLASSROOM

#### ON THE MOVE (241)

MONDAY, NOVEMBER 2

SESSION 1: 10–11 A.M.

SESSION 2: 11:30 A.M.–12:30 P.M.

Hopping, crawling, flying, swimming, running, swinging. Animals move in many different ways. Come and learn how they move, watch live animals move, and try moving like they do.

#### WHO LIVES HERE? (252)

MONDAYS: FEBRUARY 1 & 15, 10–11 A.M.

A lodge for a beaver, a hive for a bee, a cave for a bat, a nest for a bird, or an underground tunnel for a mole. None of those sound like homes to us, but they are definitely homes for animals. Come meet live animals, discover who lives where, and make crafts to take home.

#### WHAT'S FOR LUNCH? (253)

MONDAYS: MARCH 1 & 15, 10–11 A.M.

What are your favorite foods? Come and learn what different kinds of animals like to eat. Would you want bugs for breakfast? How about mice for lunch? Or maybe snails for supper? Meet live animals, make crafts, and learn who eats what. I promise we won't eat any bugs.

#### WHO SAID THAT? (254)

MONDAYS: APRIL 5 & 19, 10–11 A.M.

Hoots, barks, tweets, hisses, meows and more. Come and listen to animal sounds, learn how to make those sounds, and meet the animals who make them. We'll sing songs, make crafts, hear a story and have lots of fun.



## EDUCATOR TREKS

**FOR EDUCATORS ONLY.** GET INTO THE FIELD AND EXPLORE THE NATURAL HISTORY AROUND YOU. DISCOVER WAYS TO INTEGRATE OUTDOOR EXPERIENCES INTO ALL AREAS OF YOUR CURRICULA. FOR MORE INFORMATION OR TO REGISTER, CONTACT MIKE.DUNN@NCMAIL.NET, 919.733.7450 X620, EXCEPT WHERE NOTED.

### BIRDS OF WINTER (106)

FRIDAY, DECEMBER 11 (DEPART RALEIGH AT 3:45 PM) — SUNDAY, DECEMBER 13

FEE: \$145 (INCLUDES LODGING, SOME MEALS, TRANSPORTATION)

Spend two days in the wilds of eastern North Carolina (Lake Mattamuskeet and Pocosin Lakes National Wildlife Refuges and Pettigrew State Park) observing one of the largest concentrations of winter birds along the East Coast. Learn how to identify waterfowl, raptors and other species. Short hikes and easy viewing from the Museum van make this an ideal trip for both novice and seasoned birders. *\*Offered as an outing for educators and their friends or families.*

MINIMUM AGE: 14 (MINORS MUST BE ACCOMPANIED BY REGISTERED ADULT)

### WHERE SWANS FLY & BEARS WALK (107)

FRIDAY, JANUARY 8 (DEPART RALEIGH AT 3:45 P.M.) — SATURDAY, JANUARY 9

FEE: \$80 (INCLUDES LODGING, SOME MEALS, TRANSPORTATION)

Join Museum staff and refuge biologists as we experience one of the greatest wildlife spectacles in North Carolina — thousands of tundra swans, snow geese and other waterfowl over-wintering in Pocosin Lakes National Wildlife Refuge, an area rich in wildlife such as black bears, bobcats and red wolves. Learn to identify waterfowl and other winter birds. Pick up practical tips on observing and preserving wildlife tracks and signs. Gain insights into incorporating lessons on wild creatures into your curriculum.

### CREATING INTERPRETIVE TRAILS (108)

SATURDAY, APRIL 10, 10 A.M.—5 P.M.

FEE: \$35 (INCLUDES BLUEBIRD BOX, RESOURCE MATERIALS)

Join us at the Museum's field station, Prairie Ridge, for a day of exploration as we share ideas for creating learning stations and nature trails in outdoor areas on school grounds and nature parks. See techniques for studying animal populations, including reptile and amphibian cover boards, treefrog pipes, track boxes and bird houses. Discover how to sample aquatic habitats, monitor bird feeding stations and learn about citizen science stations you can create.

### BUTTERFLY PINNING & BACKYARD BUG COLLECTING (109)

MONDAY, APRIL 19, 4–6 P.M.

FEE: \$35 (INCLUDES RESOURCE MANUAL, PINNING BOARD, BUTTERFLY MOUNT)

Work with Museum staff in the Naturalist Center to prepare, pin and mount a variety of spectacular tropical butterflies. Learn the various techniques used to catch, preserve and mount these and other fascinating arthropods for decades of enjoyment. Explore the possibilities of insect collecting in your very own backyard! Learn how to construct creative and economical traps and devices, along with interesting preservation methods that will open up the world of entomology to you and your students.

### NATURE WALKING WITH YOUNG CHILDREN (110)

SATURDAY, APRIL 24, 9 A.M.—3 P.M.

FEE: \$25 (INCLUDES CLASSROOM MATERIALS)

Learn easy hands-on approaches to teaching about nature at the Museum's Prairie Ridge Ecostation. As we explore a native Piedmont prairie, look for small pond creatures and find animal signs on the trails. We'll emphasize how these experiences can be shared with young children inside and outside the classroom. **For preschool and elementary school teachers.**

DAY CARE CREDIT: 6 HOURS



MELISSA DOWLAND



MELISSA DOWLAND

## PRAIRIE RIDGE PROGRAMS

### TUESDAY WALKS AT PRAIRIE RIDGE

TUESDAYS: JANUARY 5 & 19, FEBRUARY 2 & 16, MARCH 2 & 16, APRIL 13\* & 27  
8:30 A.M.—10:30 A.M.

FEE: \$4 PER WALK (\$2 FOR FRIENDS OF THE MUSEUM)

Come out with us and see what time it is in nature! What's happening in the prairie? Are there tadpoles in the pond? Which trees in the lowland arboretum are flowering? Find the answers as you take a leisurely 1-mile walk with a Museum naturalist through our 38-acre Prairie Ridge Ecostation. For information or to register, contact Cathy Fergen at 919.733.7450 x671 or [cathy.fergen@ncdenr.gov](mailto:cathy.fergen@ncdenr.gov).

MINIMUM AGE: 8 (MINORS MUST BE ACCOMPANIED BY REGISTERED ADULT)

\*SPECIAL FAMILY WALK; ALL AGES WELCOME

### GROUNDHOGS AMONG US

TUESDAY, FEBRUARY 2 (GROUNDHOG DAY), 3–4 P.M.

#### Free

Come learn about our region's largest squirrel, the groundhog. Learn about the ecology and habits of groundhogs, also known as woodchucks, as we search for them in the wild. For information, contact Brian Hahn at 919.733.7450 x674 or [brian.hahn@ncdenr.gov](mailto:brian.hahn@ncdenr.gov).

### CITIZEN SCIENCE DAYS: GREAT BACKYARD BIRD COUNT

WEDNESDAY, FEBRUARY 10, 3–5 P.M.

#### Free

Learn how to help scientists study birds during the Great Backyard Bird Count, an annual four-day event that engages bird watchers (from beginners to experts) in counting birds to create a real-time snapshot of where the birds are across the continent. Children 15 years and younger must be accompanied by an adult. For information or to register, contact Charles Yelton at 919.733.7450 x672 or [charles.yelton@ncdenr.gov](mailto:charles.yelton@ncdenr.gov).

MINIMUM AGE: 8

### NATIONAL INVASIVE WEEDS AWARENESS WEEK

SATURDAY, FEBRUARY 27, 9 A.M.—NOON

#### Free

Join us for a morning of education and eradication. Learn more about invasive exotic plant species and how to reduce their impact on our native vegetation, and then help remove those invasive plants. A guided tour highlighting native prairie restoration, wetland habitat, sustainable building materials, water conservation and renewable energy will follow. For information or to register, contact Brian Hahn at 919.733.7450 x674 or [brian.hahn@ncdenr.gov](mailto:brian.hahn@ncdenr.gov).

### REPTILE & AMPHIBIAN ROUNDUP

SATURDAY, MARCH 13, 3–4 P.M.

#### Free

Join a naturalist and search Prairie Ridge for reptiles and amphibians. Learn about the lifecycles of these animals and about survey techniques such as coverboards and PVC refugia. For information or to register, contact Cathy Fergen at 919.733.7450 x671 or [cathy.fergen@ncdenr.gov](mailto:cathy.fergen@ncdenr.gov).

### CITIZEN SCIENCE DAYS: FROGWATCH USA

FRIDAY, APRIL 23, 7–9 P.M.

#### Free

Scientists are recruiting volunteers from across the country to help them monitor native frog and toad populations, which are facing numerous challenges. You can help researchers by learning how to identify local species and reporting your observations via Frogwatch USA. Children 15 years and younger must be accompanied by an adult. For information or to register, contact Charles Yelton at 919.733.7450 x672 or [charles.yelton@ncdenr.gov](mailto:charles.yelton@ncdenr.gov).

MINIMUM AGE: 8

### TAKE A CHILD OUTSIDE AT PRAIRIE RIDGE

WEDNESDAY, APRIL 14, 3–6 P.M.

#### Free

Join a naturalist for a guided walk through a Piedmont prairie to our bird blind and pond. Visit our Nature Neighborhood garden and enjoy hands-on activities at our "green" outdoor classroom. Walks begin every 30 minutes. All ages are welcome; children 15 or younger must be accompanied by an adult. For information, contact Kimberly Smart at 919.733.7450 x673 or [kimberly.smart@ncdenr.gov](mailto:kimberly.smart@ncdenr.gov).

## MUSEUM AFFILIATE GROUPS

MUSEUM AFFILIATE GROUPS FOSTER RESEARCH, EDUCATION AND AN APPRECIATION OF OUR NATURAL HERITAGE.

### CAROLINA BIRD CLUB

[www.carolinabirdclub.org](http://www.carolinabirdclub.org)

Founded in 1937, membership is open to those interested in the study and conservation of wildlife, particularly birds. The Club meets three times a year (Spring, Fall and Winter) at different locations in North or South Carolina.

### NORTH CAROLINA ENTOMOLOGICAL SOCIETY

[cipm.ncsu.edu/ent/ncentsocl](http://cipm.ncsu.edu/ent/ncentsocl)

The Society was established to promote entomological accomplishment and to cultivate a closer relationship among its members through encouragement of research, discussions among professional and amateur entomologists and dissemination of entomological information to the general public.

### NORTH CAROLINA FOSSIL CLUB

[www.ncfossilclub.org](http://www.ncfossilclub.org)

Fossil-related topics are presented after short business meetings, held at the Museum on the third Sunday in January, March, May, July and September, 1–5 p.m. The public is welcome.

### NORTH CAROLINA HERPETOLOGICAL SOCIETY

[www.ncherps.org](http://www.ncherps.org)

This is an organization of amateur and professional herpetologists dedicated to reptiles and amphibians. Meetings are held in the spring and fall of each year.

### NORTH CAROLINA NATIVE PLANT SOCIETY

[www.ncwildflower.org](http://www.ncwildflower.org)

Margaret Reid Chapter (serving Raleigh, Durham, Cary and surrounding areas) meets monthly on the first and third Sunday afternoons at the Reid Garden (1439 Dixie Trail, Raleigh) to carpool at 1 p.m.

### NORTH CAROLINA SHELL CLUB

[www.ncshellclub.org](http://www.ncshellclub.org)

The club fosters the education and promotion of conchology and malacology, promotes interest in shell collecting with an emphasis on conservation and accountability, enhances understanding of the diversity of mollusks and provides a forum for individuals interested in shells. Meets four times annually.

### PIEDMONT WILDLIFE CENTER

[www.piedmontwildlifecenter.org](http://www.piedmontwildlifecenter.org)

This organization's mission is to support North American wildlife through rehabilitation, education and scientific study with emphasis on the conservation of wildlife and its habitat in North Carolina.

### RALEIGH ASTRONOMY CLUB

[www.raleighastro.org](http://www.raleighastro.org)

The club meets at the Museum on the second and fourth Fridays of each month, 7:30–10 p.m. Some club meetings are viewing sessions at offsite locations. For information, call 919.460.7900.

### TAR HEEL GEM & MINERAL CLUB

[www.tarheelclub.org](http://www.tarheelclub.org)

The main objectives of the club are to investigate, preserve and share knowledge of rocks, minerals and precious stones, and to promote interest in mineralogy, paleontology, earth sciences and lapidary techniques among club members and the general public.

### TRIANGLE TROGLODYTES GROTTO

[www.RTPnet.org/~tritrogs/](http://www.RTPnet.org/~tritrogs/)

This is the local chapter of the National Speleological Society, a group dedicated to cave conservation, exploration and education. Meetings are held at the Museum 7:30–9:30 p.m. the fourth Tuesday of each month (January–November).

### WAKE AUDUBON SOCIETY

[www.wakeaudubon.org](http://www.wakeaudubon.org)

The general public may participate in monthly bird watching trips as well as hour-long programs following a short meeting of the Wake Audubon Society, held at 7:30 p.m. on the second Tuesday of every month at the Museum.

## GUIDED LEARNING CENTERS

### DISCOVERY ROOM

Hands-on exploration for families and young children. Registered classes for preschool–1st grade, Tuesday–Friday mornings. For more information, call Jan Weems, 919.733.7450 x615.

TUESDAY–FRIDAY:

NOON–4 P.M. (SEPTEMBER–MAY)

11 A.M.–3 P.M. (JUNE–AUGUST)

SATURDAY: 11 A.M.–4 P.M.

SUNDAY: 1–4 P.M.

### LIVING CONSERVATORY

Experience a dry tropical forest alive with plants, butterflies, reptiles and even a two-toed sloth! Educator workshops on butterfly pinning, plants of the tropics and more. Registered classes for 5th grade and up on Mondays. For more information, call Martha Flanagan, 919.733.7450 x603.

TUESDAY–FRIDAY: 10 A.M.–3 P.M.

SATURDAY: 11 A.M.–4 P.M.

SUNDAY: 1–4 P.M.

### NATURALIST CENTER

Investigations with natural collections for ages 8 and older (ages 8–11 must be accompanied by an adult). Registered classes for middle school and high school students, Tuesday–Friday mornings. For more information, call John Connors, 919.733.7450 x602.

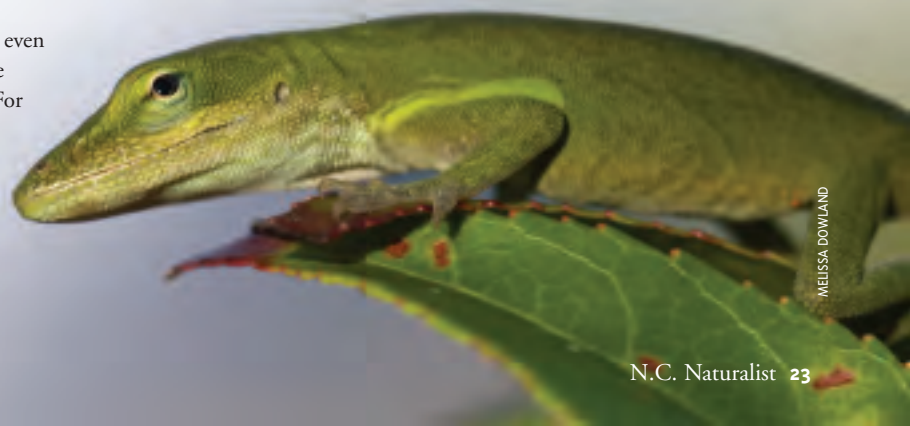
TUESDAY–FRIDAY:

NOON–4 P.M. (SEPTEMBER–MARCH)

11 A.M.–3 P.M. (APRIL–AUGUST)

SATURDAY: 11 A.M.–4 P.M.

SUNDAY: 1–4 P.M.



MELISSA DOWLAND

## Volunteer

Get behind the scenes — be a Museum volunteer! Explore your interests and talents while providing vital support in Curiosity Classes, exploration carts, animal care, special events and research collections, as well as in Discovery Room, Naturalist Center, Fossil Lab and Living Conservatory programs. Volunteers receive training, Museum Store discounts and the opportunity to learn in a unique environment. For more information, call Tullie Johnson, 919.733.7450 x605.

## Rent the Museum

Hold your business meetings during the day or a modest to lavish event at night among four floors of coastal animals, mountain animals and spectacular exhibits. Visit [naturalsciences.org/friends/leasing.html](http://naturalsciences.org/friends/leasing.html) or call 919.733.7450 x308 for more information.

## Birthday Parties

Make this year's birthday your child's best ever with a Museum celebration. Hands-on programs feature live animals, crafts and games for ages 3–10, with themes ranging from ferocious dinosaurs to furry marsupials. Parties are available on Saturdays and Sundays. For more information, call 919.733.7450 x514. Museum members receive discounts.

## Museum Store

The Museum Store is the place to find books about North Carolina's natural world as well as a wide assortment of videos, DVDs/CDs, gems, jewelry, natural science kits, educational toys, gift items and more. Museum members receive discounts.

MONDAY–SATURDAY: 9 A.M.—4:45 P.M.

SUNDAY: NOON—4:45 P.M.

## Acro Café



Start your mornings at the Museum. Acro Café now serves breakfast Monday through Saturday, 8–10 a.m. Enjoy a leisurely lunch break of delectable soups, sandwiches and hot

entrées. Sip a cup of organic, shade-grown coffee and watch the hummingbirds and butterflies in the neighboring Living Conservatory. Museum members receive discounts.

MONDAY–SATURDAY: 8 A.M.—4 P.M.

SUNDAY: NOON—4:30 P.M.

## FRIENDS OF THE MUSEUM MEMBERSHIP

Become a Museum member and enjoy free or reduced admission to special exhibits; invitations to members-only events; reduced admission for Museum camps, programs and trips; and free admission to more than 250 science museums worldwide. It's easy to join — call Friends of the Museum at 919.733.7450 x350, fill out and mail the registration/membership form below, or join online at [www.naturalsciences.org](http://www.naturalsciences.org).



### BECOME A FRIEND OF THE MUSEUM! NEW MEMBERSHIP RENEWAL

ADULT #1 NAME: \_\_\_\_\_

ADULT #2 NAME: \_\_\_\_\_

ADDRESS: \_\_\_\_\_

CITY: \_\_\_\_\_

STATE: \_\_\_\_\_

ZIP CODE: \_\_\_\_\_

PHONE (HOME): \_\_\_\_\_

PHONE (WORK): \_\_\_\_\_

E-MAIL: \_\_\_\_\_

INDIVIDUAL MEMBERSHIP \$45.00 X  = \_\_\_\_\_

NUMBER IN FAMILY

FAMILY MEMBERSHIP \$55.00 X  = \_\_\_\_\_

TOTAL AMOUNT ENCLOSED = \_\_\_\_\_

MAKE CHECK PAYABLE TO **FRIENDS OF THE MUSEUM.**

MAIL TO: FRIENDS OF THE MUSEUM, P.O. BOX 26928, RALEIGH, NC 27611-6928.

FOR MORE INFORMATION ON MEMBERSHIP, INCLUDING GIFT MEMBERSHIPS, CALL 919.733.7450 X350.

FOR INFORMATION ON DONOR LEVEL MEMBERSHIPS, CALL 919.733.7450 X351.

## PROGRAM REGISTRATION

A completed registration form and check for payment are necessary to register for activities that require a fee. Information, consent and health forms will be sent upon acceptance. The Museum can grant refunds only when a cancellation is received at least two weeks before the activity. A \$20 processing fee is required for refunds, along with your Social Security number. *Questions? Call 919.733.7450 x555.*

PARTICIPANT NAME (18 OR OLDER): \_\_\_\_\_

PARTICIPANT NAME (18 OR OLDER): \_\_\_\_\_

PARTICIPANT NAME (18 OR OLDER): \_\_\_\_\_

PARTICIPANT NAME (18 OR OLDER): \_\_\_\_\_

PARENT NAME (FOR MINORS): \_\_\_\_\_

CHILD'S NAME: \_\_\_\_\_

GRADE/AGE: \_\_\_\_\_

CHILD'S NAME: \_\_\_\_\_

GRADE/AGE: \_\_\_\_\_

ADDRESS: \_\_\_\_\_

CITY: \_\_\_\_\_

STATE: \_\_\_\_\_

ZIP CODE: \_\_\_\_\_

PHONE (HOME): \_\_\_\_\_

PHONE (WORK): \_\_\_\_\_

E-MAIL: \_\_\_\_\_

FRIENDS OF THE MUSEUM MEMBER?  YES  NO

MEMBERSHIP #: \_\_\_\_\_

EXP. DATE: / /

PROGRAM #	PROGRAM TITLE	SESSION DATE(S)	FEE	# REGISTERING	TOTAL FEE

RETURN TO: SCHEDULING COORDINATOR  
N.C. MUSEUM OF NATURAL SCIENCES  
11 WEST JONES STREET  
RALEIGH, NC 27601-1029

TOTAL AMOUNT ENCLOSED  
(CHECKS PAYABLE TO MUSEUM EXTENSION FUND)